

# 27<sup>th</sup> SABRA Composing Tourney

**An orthodox H#2 is required with the following theme::**

In the first move, a black piece opens a future line for white (anticipatory line opening). A white piece, in white's first move, arrives at the opened line ready to exploit it.

Black's thematic piece, in addition to the line opening, must also perform on B1 or B2 one of the following: pin/self-pin, unpin/self-unpin or interference.

**Judge:** Menachem Witztum

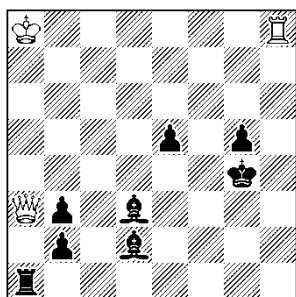
**Prize:** 1 bottle of **SABRA** – the liqueur of Israel for your enjoyment and 2 bottles of selected Israeli liquers.

**Entries** should be submitted to **Paz Einat** by email: pazeinat@gmail.com  
Until 31/7/24 at 19:00.

Open to all composers but those not participating in the congress are limited to one problem only and only congress participants can receive prizes.

Examples :

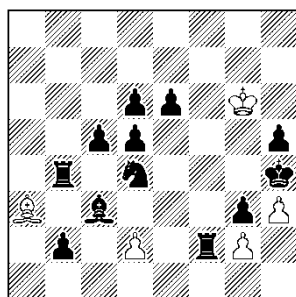
Menachem Witztum IL  
No 3111- Polish Chess  
Fedetation 2024



H#2 b) b $\hat{g}$ 5→f4 (C+) (3+8)

- a) 1. Qa6 Bxb3 2. Qf4 Bh3#  
b) 1. Qa5 Bxb2 2. Qf5 Bg2#

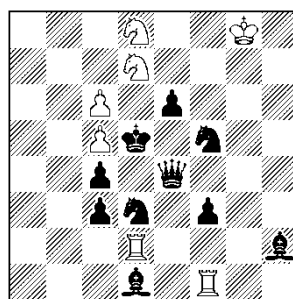
Menachem Witztum IL  
No 3118- Polish Chess  
Fedetation 2024



H#2 b) w $\hat{a}$ 3 (5+12)

1. Qf5 Bxb2 2. Qf6 Qxf6#  
1. Qf3 Ba4 2. Bf4 Bxf4#

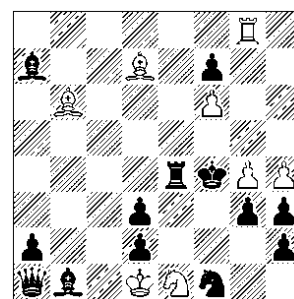
Menachem Witztum IL  
E1381- Super Problem 2024



H#2 b) w $\hat{d}$ f1 (7+10)

- a) 1. Bd4 Be1 2. Qf4 Be5#  
b) 1. Qd4 Bh3 2. Qe5 Qxe6#

Menachem Witztum IL  
E1394 -Super problem 21/6/2024



H#2 2.1.1.1 (8+13)

1. Bb4 Be8 2. Bb2 Qc7#  
1. Bc4 Qc6 2. Bc2 Qxd3#