

## The 21st Japanese Sake Tourney

**Theme:** H#2 Protean (Frankfurt) Chess. No other fairy pieces and/or conditions allowed. Entries must be computer-tested.

**Prizes:** Bottles of Sake. Only congress participants can receive bottles.

**Deadline:** Wednesday, July 31st, 12 PM

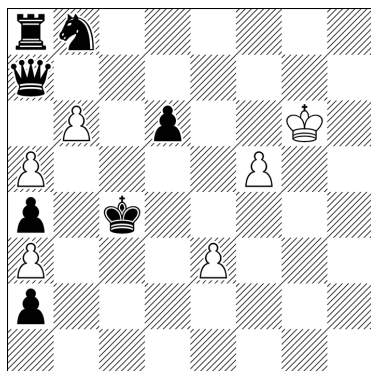
**Send to:** Tadashi Wakashima (wakashimatadashi@gmail.com)

### Definition:

**Protean (Frankfurt) Chess:** When a unit captures, it retains its color but takes the nature of the captured unit. A King capturing retains its royal power as a royal piece. In the Protean version a captured pawn continues in the same direction, so a captured black pawn becomes a backward moving white pawn, but in the Frankfurt version it moves according to its new color.

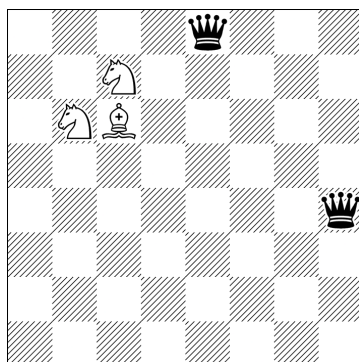
### Examples:

A. Hans Peter Rehm  
feenschach 1960



H#2 Frankfurt Chess  
b/c/d) a7Q→R/B/S

B. Tadashi Wakashima  
Original



H#2 Frankfurt Chess  
Royal S c7, Royal Q h4  
b) Sb6→d3

### Solutions:

A.

a) 1.Kd5 bxa7(=Q) 2.Ke5 Qd4#

b) 1.Kd3 bxa7(=R) 2.Kxe3(=rP) Re7#

c) 1.Kb5 bxa7(=B) 2.Kxa5(=rP) Bb6#

d) 1.Kb3 bxa7(=S) 2.Kxa3(=rP) Sb5#

B.

a) 1.Qa8 Bh1 2.rQxh1(=rB) Sbxa8(=Q)#

b) 1.Qe4 Se1 2.rQxe1(=rS) Bxe4(=Q)#