

bernd ellinghoven memorial tourney

WCCC Jūrmala 2024

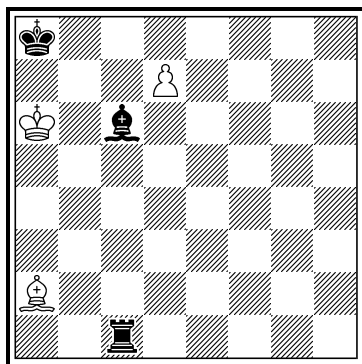
For a long time bernd ellinghoven had been the representative of *Schwalbe* to the PCCC and later to the WFCC. He was editor of *feenschach* and (with Denis Blondel) publisher of the *FIDE Albums* and high-quality books in the *editions fee=nix*-series. He was a prolific composer with a strong interest in long strategic helpmates. He coined the phrase "helpmate revolution". A theme tourney is organised in his memory.

The organisers are asking for **helpplay problems** showing an **invisible Klasinc** in the sense of the following definition. Fairy pieces and conditions are allowed.

Invisible Klasinc: Piece **A** leaves square **x** to allow a second piece **B** to pass over square **x**. Then piece **B** (without having captured or changed) again passes over the square **x** in *opposite* direction. Thereafter the thematic piece **A** returns to square **x**. [So, after the manoeuvre it looks as if piece **B** has not crossed the thematic square **x** at all. Therefore the attribute "invisible".]

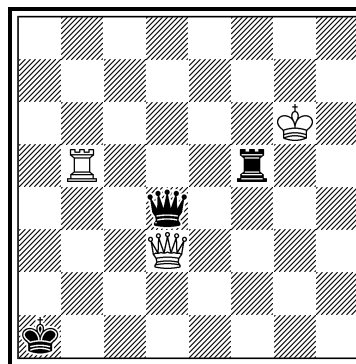
Examples.

1 illustrating example



hs#4.5 C+ (3+3)

2 Torsten Linß 2682 *Gaudium* 30.6.2024



hs#6 C+ (3+3)

1) 1... Ba4 2.d8=R+ Rc8 3.Rd6 Rc3 4.Rb6 Ra3 5.Bd5+ Bc6# — black Bishop leaves c4 and opens the line for Rc1-c8-c3.

2) 1.Qe2 Rh5 2.Rg5 Qd2 3.Kf5 Kb2 4.Ke4 Kc3 5.Rb5 Rf5 6.Qd3+ Q:d3# — black Rook vacates f5 and opens (Bristol form of Klasinc) for Rb5-g5-b5.

Closing date: Thursday, August, 1st, 8pm (Jūrmala time), entries to torsten.linss@googlemail.com and/or on paper to either of the judges.

Judges: Kjell Widlert, Torsten Linß

Prizes: bottles of bernd's favorite beverage... (For congress participants only)

Note: Open for participation world wide.